

# Alcester Academy

## WEEKLY BULLETIN



14th January 2022

Dear parents and carers,

Good afternoon. I hope that you have had a good week.

Many congratulations to our year 10s this week for stepping into their exam season with maturity. We will be sending home a data report with the examination results on for parents and carers in due course. Our year 11s also began some of their external vocational exam units this week. It is just six school weeks until their next mock series too.

Our spring clubs began this term in earnest again. Students are embarking upon lego club, chess, dance, motorsport, journalism, law society, guitar and board games to name just a selection. Rowing is now on offer with Miss Burgess. My own daughters engaged in this hobby through a school club initially and ended up rowing at national level several years later. Our *Signing Club* was also extremely popular with Miss Watson this week. I was delighted to see so many students attending.

### Covid cases today

As it stands today, our case numbers are as follows:

Year 7 — 2 cases

Year 8 — 6 cases

Year 9 — 1 case

Year 10 — 1 case

Year 11 — 2 cases

Luckily, we have no staff cases presently. I attribute the minor increase in student cases today to the fact that we are all now using LFT results and not PCR confirmation.



The LSU team have secured more LFT kits for you and students have received those today. Please search school bags if you have not seen them yet. Let me know as always of any positive LFT results. We will require a copy of the NHS email that shows this has been registered for your son or daughter if you do not use PCR results. This was another change to guidance again this week.

We have included an adapted isolation flow chart for you at the end of the bulletin to help now that this period has been reduced again. Day 5 and 6 require negative LFT results 24 hours apart now (early morning) and students can return to school on Day 6.

### Next student vaccinations – Covid

We have been notified that the vaccine team will be in school again on Friday 4th February for the second student doses 12-15 years. I will update you specifically when I hear more about this process. Please consider using the vaccine drop-in centre in Alcester before then if you wish to.

### Prom update

We are attempting to book a prom currently. Please move forward cautiously with this however. Very sadly we have been unable to run this for the last two years due to covid. I wouldn't recommend purchasing expensive dresses or suits just yet therefore. Last year we had to cancel within just a few weeks of the event and, with regret, I know how disappointed parents and students were by this.

## Year 11 update

Students have been issued with a new intervention timetable for lunchtime and after school sessions. We will shortly be publishing our Saturday offer in readiness for the next round of mock examinations that take place directly after February half term.

WEEK A	Lunchtime	After school (3.30-4.30pm)
Monday	Maths (by invitation only)	
Tuesday	English (by invitation only)	Maths
Wednesday	DT	English
Thursday	Biology triple	Physics triple
Friday	Combined Science	Chemistry triple
WEEK B	Lunchtime	After school (3.30-4.30pm)
Monday	Art/Photography <b>Maths (by invitation only)</b>	
Tuesday	Art/Photography	PTE
Wednesday	German (MFL2) Performing Arts/Music	iMedia and Computer Science Performing Arts/Music
Thursday	French (MFL1)	Art/Photography <b>Chemistry triple</b>
Friday	Geography	

## Year 8 options

For reference, this is our current timeline for our year 8 options process in school:

- **Thursday 3rd March. Year 8 Parents' Evening (online).**
- **Week beginning 14th March. Year 8 exams in lessons.**
- **Week beginning 4th April. Option lesson taster week for students.**
- **Year 8 reports to parents before Easter.**
- **Wednesday 4th May. 6.30pm Parent Options Event (live dependent on Covid stats at the time)**
- **Thursday 19th May. Option deadline. Forms handed in.**

Around lesson taster time, students will also have assemblies on new courses from subject leaders. These were recorded last year because of covid and are on the school website under *Options* if you want to get a head start at home on the whole process.

## Other useful dates this year:

**Thursday 17th February. Year 7 Parents' Evening online**

**Thursday 24th March. Year 9 Parents' Evening online**

**Thursday 31st March. Provision Sports Awards Evening. Invited students**

## Jubilee Pudding Design

<https://www.fortnumandmason.com/platinum-pudding>

Do you have an idea for an award winning pudding? There is a national search for a new pudding to commemorate the Queen's Platinum Jubilee open to 8 year olds or over. Could this be an opportunity for Alcester Academy students?



## Children with EHCPs

Thank you to Louisa Hughes from Warwickshire SENDAR for her commitment to our children with EHCPs over many years. On behalf of staff and parents, I wish Louisa all the very best as she moves on to a promoted secondment in Warwickshire. Our new EHC plan co-ordinator will be Will Gimes.

## Drop-In

Parent drop-in continues each Wednesday 3.30-4.30pm. This is a chance to inform us of a concern and then allow us time to look into it for you or your child.

## New IT support

We are delighted announce that we will be working alongside Concero Education Technology in the near future. I'd like to take this opportunity to thank Lourdes IT for everything that they have supported the school with in recent years. Without Lourdes, I'm not quite sure how we would have coped with the early pandemic frankly.



## Road Works

Thank you for your patience around the junction to Gerard Road. From my discussion with the site team on duty there these will be completed in the next few days, but the team will be returning to complete the job in this area for mid February.

I'm also grateful for the regular updates on the Bidford road works right now from a parent, thank you.

## Keep going Jefferon, year 9

Jefferson competed in the British National Cyclocross Championships on Saturday 8th January. In terrible conditions which suited only the hardest of riders, Jefferson made his way through to 11th place at the finish line. Many congratulations!



## Look Out

Our year 11 Student Leaders are taking over the bulletin in the next couple of weeks as they do annually. I give them complete autonomy with this so who knows what might follow!

Wishing you a very relaxing weekend ahead.

Best wishes

*Sarah Mellors*  
Headteacher

## Epraise Updates—Last 7 days



### Top Students—last 7 days:

1	Jack	8HL	16 points
2	Sam	7RA	14 points
2	Callum	8KA	14 points
2	Lola-Mai	9BW	14 points
5	Katy	7TY	13 points
5	Ed	9YA	13 points
5	Seven	9YA	13 points
8	Aidan	7HT	12 points
8	Zak	8SO	12 points
8	Cole	7RA	12 points

### Top Subjects—last 7 days:

1	Maths	484 points
2	Science	413 points
3	English	404 points
4	Art	376 points
5	Geography	348 points
6	PE	311 points
7	German	185 points
8	IT	113 points
9	Btec PE	76 points
10	French	69 points

### Top Tutor Groups—last 7 days:

1	7TY	171 points
2	7RA	170 points
3	7SI	163 points
4	7HT	159 points
5	8SO	158 points
5	9YA	158 points
7	7WI	154 points
8	9BL	146 points
9	8KA	137 points
10	9BW	134 points

### Top Staff—last 7 days:

1	Mr Bastock	559 points
2	Mr Powell	381 points
3	Miss Lewis	332 points
4	Mr Yarrington	298 points
5	Mr Bowater	243 points
6	Miss Heitmuller	213 points
7	Mr Martin	207 points
8	Miss Simpson	114 points
9	Mrs Stedman	105 points
10	Miss Cooper	88 points



DRAFT RSE Policy  
Consultation with parents and carers

Along with the bulletin this week is a DRAFT RSE Policy.  
This is your opportunity to ask any questions and provide comment to  
Miss Buckthorp.

Please email her on: [karenbuckthorp@alcesteracademy.org.uk](mailto:karenbuckthorp@alcesteracademy.org.uk)  
Thank you.

## Exam, Reporting & Parents' Evening Timetable

### Year 11

GCSE Mock Exams 2 — weeks beginning Monday 28<sup>th</sup> February & 7<sup>th</sup> March 2022  
Full Report published to parents/carers — Thursday 7<sup>th</sup> April 2022  
GCSE Examinations — Monday 16<sup>th</sup> May — Tuesday 28<sup>th</sup> June 2022  
*(these dates are provisional and will be confirmed by the awarding bodies imminently)*  
GCSE Contingency Day — Wednesday 29<sup>th</sup> June 2022 - all students must be available

### Year 10

Internal Exams — weeks commencing Monday 10<sup>th</sup> & 17<sup>th</sup> January 2022  
Exam Results Report published to parents/carers — Thursday 17<sup>th</sup> February 2022  
Internal MFL Speaking Exams — week commencing Monday 20<sup>th</sup> June 2022  
Full Report published to parents/carers — Monday 20<sup>th</sup> June 2022

### Year 9

Parents' Evening via SchoolCloud — Thursday 24<sup>th</sup> March 2022 – 4-6.30pm  
Internal Exams — weeks commencing Monday 28<sup>th</sup> March & 4<sup>th</sup> April 2022  
Full Report published to parents/carers — Friday 20<sup>th</sup> May 2022  
Data Report published to parents/carers — Monday 18<sup>th</sup> July 2022

### Year 8

Parents' Evening via SchoolCloud — Thursday 3<sup>rd</sup> March 2022 - 4-6.30pm  
In-class Exams — week commencing Monday 14<sup>th</sup> March 2022  
Data Report published to parents/carers — Thursday 7<sup>th</sup> April 2022  
Options Evening — Wednesday 4<sup>th</sup> May 2022 — time tbc  
Data Report published to parents/carers — Monday 20<sup>th</sup> June 2022

### Year 7

Parents' Evening via SchoolCloud — Thursday 17<sup>th</sup> February 2022 – 4-6.30pm  
Data Report published to parents/carers — Thursday 7<sup>th</sup> April 2022  
In-class Exams — week commencing Monday 13<sup>th</sup> June 2022  
Full Report published to parents/carers — Wednesday 20<sup>th</sup> July 2022



## Term Dates 2022

### SPRING TERM 2022

Half Term Monday 21st – Friday 25th February 2022  
Back to school Monday 28th February 2022

Spring Term ends (Easter) Friday 8th April 2022

### SUMMER TERM 2022

Summer Term begins Monday 25th April 2022

May Bank Holiday Monday 2nd May 2022

Half Term Monday 30th May – Friday 3rd June 2022  
Back to school Monday 6th June 2022

Summer Term ends Wednesday 20th July 2022 at 12.40pm

[2021/2022 TERM DATES ON THE SCHOOL WEBSITE](#)

Attendance Matters!



Every Student, Every School, Every Day

### School Attendance — up to 13.1.22

Year 7	Year 8	Year 9	Year 10	Year 11	Whole School
91.6%	92.8%	92.4%	90.6%	90.2%	91.6%

### This week's top tutor groups

7WI – 96.9%, 8RO – 96.3%, 9YA – 98.8%, 10BI – 97.1% and 11HO – 97.9%.

*Well done! Mrs Hodges*

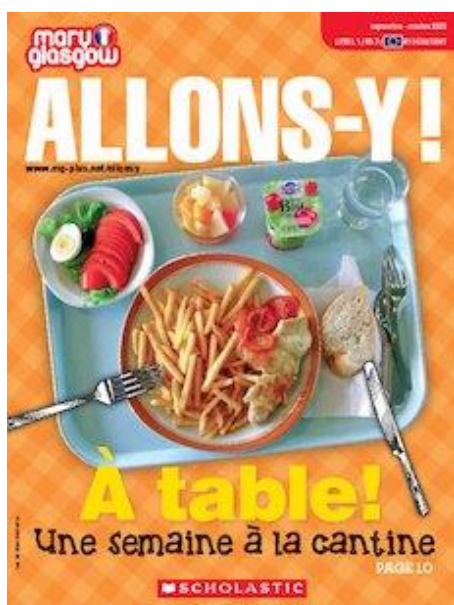
## Improve language acquisition and comprehension skills with a magazine subscription

The MFL Faculty would like to offer all students the opportunity to subscribe to some French and German magazines. Reading is a vital skill when learning a language and reading for pleasure will help to improve students' reading in lessons.

The magazines are age-related, current and on topics to engage teenagers. The cost of the subscription is £10 and includes 5 magazines. Examples of the magazines can be seen in MFL lessons.

If interested, please subscribe via School Gateway by Friday 21 January.

Thank you, Mrs Weatherley



## LEAVE OF ABSENCE DURING TERM TIME

### INFORMATION FOR PARENTS

The Supreme Court recently reached a decision in the case of *Platt v Isle of Wight Council* which has clarified the law on unauthorised leave, including holidays, during term time. The parents of children of compulsory school age are required to ensure that they attend school on a regular basis. The Supreme Court has made clear that attending school 'regularly' means that the children must attend school on every day that they are required to do so. As such, the parents of any child who is absent from school without authorisation for any length of time are likely to be considered as committing an offence under s444 of the Education Act 1996.

Head Teachers retain the ability to authorise leave in accordance with the Education (Pupil Registration) (England) Regulations 2006. When considering such requests for a leave of absence, the school are obliged to act within the law. Head Teachers may not grant any leave of absence during term time unless there are exceptional circumstances relating to the application. If the leave is granted, head teachers are able to determine the number of school days a child can be absent for.

It is for the Head Teacher to decide what is 'exceptional' and it is at their discretion if the circumstances warrant the leave to be granted. The school can only consider Leave of Absence requests which are made by the 'resident' parent.

*Each application for a leave of absence will be considered on a case by case basis and on its own merits.*

Where applications for leave of absence are made in advance and refused, the child will be required to be in school on the dates set out in the application. If the child is absent during that period, it will be recorded as an unauthorised absence, which may result in legal action being taken against the parent(s), by way of a Fixed Penalty Notice.

Failure to make an application for leave in advance can also result in a Fixed Penalty Notice being issued to the parent(s).

All matters of unauthorised absence relating to a Leave of Absence will be referred to the Warwickshire Attendance Service, part of Warwickshire County Council

**It is important to note**, Fixed Penalty Notices are issued to each parent of each absent child, (for example 2 children and 2 parents, means each parent will receive 2 invoices in the amount of £120 each, totalling £240 for both children, this is reduced to £60 per child if paid within 21 days).

Where a Fixed Penalty Notice is not paid within the required timeframe as set out on the notice, the matter will be referred to Warwickshire County Council's Legal Services to consider instigating criminal proceedings under S444 Education Act 1996.

Fixed Penalty Notices are issued in accordance with Warwickshire County Council's Code of Conduct for Penalty Notices.

**Your child's progress academically as well as socially is our shared priority**

**Warwickshire School pupils recorded 31,196 half day sessions of absence due to holiday in the Autumn term 2019.**





# Felix Dennis Young Poets Competition 2022

## Win up to £300

**Judges  
include**  
Alex Wharton  
Performance  
Poet and Author

### Who can enter?

Anyone aged 5 to 21 years living in the UK

### What's the deadline?

5.30pm on Friday 4th March 2022

### What's the prize?

5 to 10 years: **£100**

11 to 16 years: **£200**

17 to 21 years: **£300**

**PLUS** The winning and selected best poems  
will be published in a special Festival book

### How to enter

Poems can be on any theme but a maximum  
of 600 words. Only one entry per person.

Submit your entry as a Word document attachment

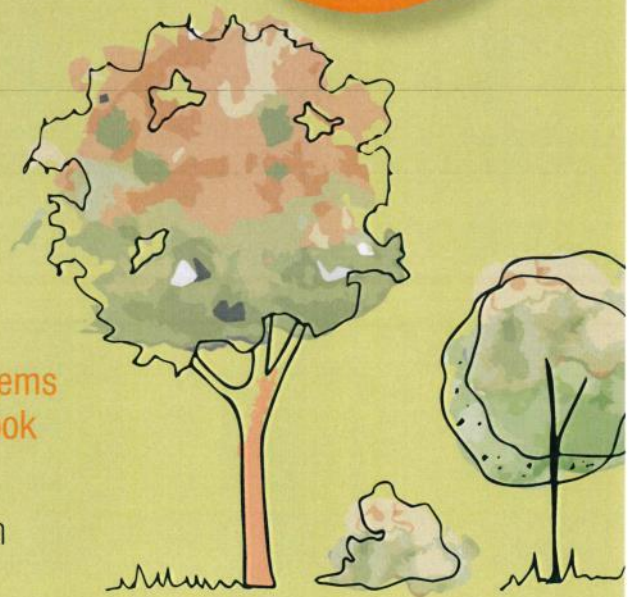
**only**. The file name **must** be your name and age.

Please also include your name and address at  
the top of the document and email it to:

**[info@stratfordliteraryfestival.co.uk](mailto:info@stratfordliteraryfestival.co.uk)**

Please go to **[www.stratlitfest.co.uk](http://www.stratlitfest.co.uk)**

For full details of how to enter



**Stratford  
Literary  
Festival**

**[stratlitfest.co.uk](http://stratlitfest.co.uk)**

## Changes to the self-isolation period

If you have taken a lateral flow and it is positive = A PCR is not necessary as of 11 <sup>th</sup> January LFD counts as positive. If anyone has any of the main symptoms of COVID-19, they are strongly advised to take a PCR test, not an LFD test. If someone with symptoms has already taken an LFD test for any reason and the result is positive, they do not need to take a follow-up PCR test.						
Day of Isolation	How to use LFT tests to end isolation before 10 days					
Day 0	<b>Self-isolation starts</b> <i>This is the day your symptoms start OR when you have taken a lateral flow and it is positive</i>					
Day 1	<b>Self-isolation</b>					
Day 2	↓					
Day 3	↓					
Day 4	↓					
Day 5	<b>Take Lateral Flow Test</b>					
	<b>Negative</b>	<b>Positive</b>				
	Continue to isolate and take another lateral flow test 24 hours later	Continue to isolate and take another lateral flow test 24 hours later				
Day 6	<b>Take Lateral Flow Test</b>	<b>Take Lateral Flow Test</b>	<b>Take Lateral Flow Test</b>			
	<b>Negative</b>	<b>Negative</b>	<b>Positive</b>			
	Your self-isolation has ended. You can return to work/school	Continue to isolate and take another lateral flow test 24 hours later	Continue to isolate and take another lateral flow test 24 hours later			
Day 7		<b>Take Lateral Flow Test</b>	<b>Take Lateral Flow Test</b>	<b>Take Lateral Flow Test</b>		
		<b>Negative</b>	<b>Negative</b>	<b>Positive</b>		
		Your self-isolation has ended. You can return to work/school (unless you have a high temperature)	Continue to isolate and take another lateral flow test 24 hours later	Continue to isolate and take another lateral flow test 24 hours later		
Day 8		<b>Take Lateral Flow Test</b>	<b>Take Lateral Flow Test</b>	<b>Take Lateral Flow Test</b>		
		<b>Negative</b>	<b>Negative</b>	<b>Positive</b>		
		Your self-isolation has ended. You can return to work/school (unless you have a high temperature)	Continue to isolate and take another lateral flow test 24 hours later	Continue to isolate and take another lateral flow test 24 hours later		
Day 9		<b>Take Lateral Flow Test</b>	<b>Take Lateral Flow Test</b>			
		<b>Negative</b>	<b>Negative</b>	<b>Positive</b>		
		Your self-isolation has ended. You can return to work/school (unless you have a high temperature)	Continue to isolate and take another lateral flow test 24 hours later	Continue to isolate and take another lateral flow test 24 hours later		
Day 10		<b>Take Lateral Flow Test</b>	<b>Take Lateral Flow Test</b>			
		<b>Negative</b>	<b>Positive</b>			
		Your self-isolation has ended. You can return to work/school (unless you have a high temperature)	Continue to isolate until 23.59pm when your isolation period ends			



ROYAL LEAMINGTON SPA COLLEGE



RUGBY COLLEGE



MORETON MORRELL COLLEGE



WARWICK TRIDENT COLLEGE



EVESHAM COLLEGE



PERSHORE COLLEGE



MALVERN HILLS CENTRE FOR DIGITAL & CYBER TECHNOLOGY

# Discover your future at our Online Open Events

Royal Leamington Spa College | Tuesday 11 January | 5.30 – 8pm

Warwick Trident College | Thursday 13 January | 5.30pm – 8pm

Malvern Hills Centre for Digital & Cyber Technology  
Thursday 13 January | 5.30 - 6.30pm

Rugby College | Tuesday 18 January | 5.30 – 8pm

Moreton Morrell College | Thursday 20 January | 5.30pm – 8pm

Evesham College | Tuesday 25 January | 5.30 – 8pm

Pershore College | Tuesday 25 January | 5.30 – 8pm

- School leaver courses
- Apprenticeships
- Degrees

## What do we offer?

Apprenticeships  
(RLS, TRI, RUG, MM, EVE, PER)

A Levels (RLS & RUG)

T Levels  
(RLS, RUG, TRI, PER, EVE & MHDC)

Agriculture (MM)

Animal Welfare (MM & PER)

Applied Sciences (RLS)

Art, Design & Media (RLS & RUG)

Business (RLS & RUG)

Childhood Studies (RLS & RUG)

Computing & Digital (RLS & RUG)

Construction (MM, RLS, RUG & EVE)

Countryside Management (MM)

Digital & Cyber (MHDC)

Engineering (RUG, TRI & EVE)

Equine & Farriery (MM)

Floristry (MM)

Games Art & Esports (RLS & EVE)

Graphic Design  
with Photography (EVE)

Hair, Barbering & Beauty  
(RLS, RUG & EVE)

Health & Social Care  
(RLS, RUG & PER)

Horticulture (PER)

Hospitality & Catering (RLS & RUG)

Motor Vehicle (RUG, TRI & EVE)

Music (RLS)

Performing & Production Arts  
(RLS & RUG)

Public Services (RUG)

Re-engagement Programmes  
(RLS, RUG, EVE & PER)

Sport (RUG, MM & PER)

Supported Learning Programmes  
(MM, RLS, RUG & PER)

Travel & Tourism (RLS)

Veterinary Nursing (MM & PER)

... and more!

RLS - Royal Leamington Spa College  
TRI - Warwick Trident College

RUG - Rugby College  
MM - Moreton Morrell College  
EVE - Evesham College

PER - Pershore College  
MHDC - Malvern Hills Centre for  
Digital and Cyber Technology



It's easier than ever to get to college

- information on bus, train and car travel to all of our colleges can be found online at [wcg.ac.uk/transport](http://wcg.ac.uk/transport)

*Booking is required for these events  
- book your place at [wcg.ac.uk/openevents](http://wcg.ac.uk/openevents)*

Powered by  
**WCG**

BE CHALLENGED

BE INSPIRED

BE EXTRAORDINARY

## SPORTS NEWS \* SPORTS NEWS \* SPORTS NEWS

### Practices and Fixtures

We have several fixtures coming up, so it is important that students attend in order to be considered for teams.

**Monday 17th January:**

Year 9 Netball @ AGS (selection letters issued)

**Tuesday 18th January:**

Year 8 Archery (Invitation letters issued)

**Wednesday 19th January:**

Year 7 and 8 Basketball

Year 7 Netball (weather dependent)

**Thursday 20th January:**

Year 9 and 10 Basketball

Year 8 Netball (weather dependent)

At the end of the school day come down to the gym and get changed as soon as possible. Normal school PE kit is required. All practices will run until 4.30pm and are open to everyone in the specified year groups. For Fixtures a separate team sheet including all the necessary details will be sent out via parentmail.

---