

Alcester Academy WEEKLY BULLETIN



8th January 2021

Good afternoon everyone,

Happy new year once more to you all.

Hats off to everyone within our community this week for reverting back to learning from home so quickly. I'm really very grateful. We know that we will be doing this until February half-term and so it is important that we are careful to adapt to this style of working from home. We know that some students like this way of working and others don't! Huge thanks to those year 7s who sat in full school uniform to learn from home this week. We were delighted to see this on our cameras. Our safety right now is of paramount importance and I hope that you and your family are managing to keep covid free. I'm also thinking about those of you who have been furloughed again, or are experiencing the challenges faced by running your own business right now. Not an easy time at all.



Our thoughts extend especially to year 11s after hearing the news of disruption to their summer exam series. We aim to continue to work as hard as we can in order to provide the students with the very best opportunities from our internal assessments. We're grateful to parents and students for attending our virtual parents evening last night where mock grades were revealed.

For new parents to the academy, please rest assured that we will be okay during this time! We gained a lot of useful experience from the previous lockdown and whilst no one wants to be in this situation, we do intend to try and make the most of it. Further in the bulletin, I've provided a summary of our expectations for you all. We do now have a *Distance Learning Policy* too and this outlines the responsibilities of parents, students and teachers at this time. [https://www.alcesteracademy.org.uk/files/Distance Learning Strategy Policy AA.pdf](https://www.alcesteracademy.org.uk/files/Distance%20Learning%20Strategy%20Policy%20AA.pdf)

Term Dates

SPRING TERM 2021

Half Term	Monday 15th – Friday 19th February 2021
Back to school	Monday 22nd February 2021
Spring Term ends (Easter)	Thursday 1st April 2021

SUMMER TERM 2021

Summer Term begins	Monday 19th April 2021
May Bank Holiday	Monday 3rd May 2021
Half Term	Monday 31st May – Friday 4th June 2021
Back to school	Tuesday 8th June 2021
Summer Term ends	Tuesday 20th July 2021 at 12.40pm
School closed	Wednesday 21st July 2021

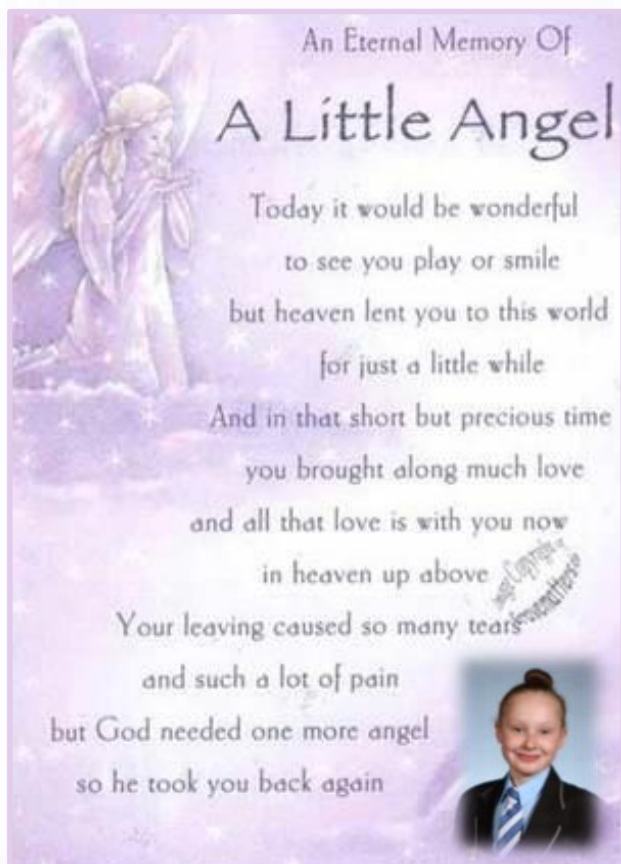
We are delighted this term to welcome Mr Schober to the science team. Mr Schober has taken over many of Mr Arris' former classes. We hope that Mr Schober will be very happy at Alcester Academy.



Updates – Year 7

Thank you to those students and parents that have sent in messages that we can give to Liv's family. They do find these comforting. We were privileged to visit Liv's family recently and offer our deepest sympathy on behalf of the entire school community at this time. We were then graced with wonderful stories of dear Liv and her passions and hobbies. I urge parents who want support for Liv's friends right now to contact school so that we can offer this to any students at such a difficult time. As soon as our students are back in school, we can begin to plan a fitting tribute. May you rest in absolute peace.

RIP 6/4/09 – 24/12/20



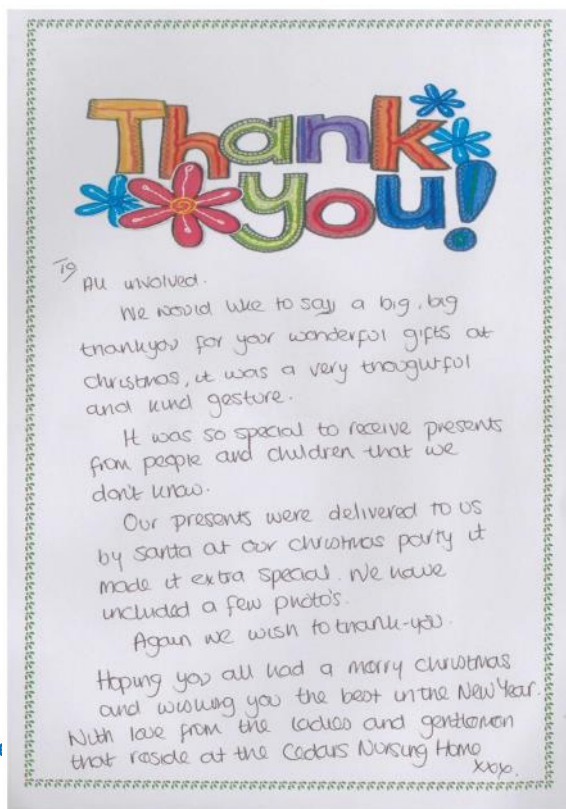
Christmas Charity Appeals

Thank you so much for all your support during our recent charity appeals.

Donations for the Arden Food Bank were just fantastic and we surpassed last year's total.



Thank you to all of you who responded with gifts for residents at The Cedars Nursing Home. They were so appreciated and we had a lovely response from them about how well these had been received.



Sponsor a Snowflake



We raised an amazing £570 from the sponsor a snowflake appeal. The proceeds of this have gone to the Alcester Community Christmas Dinner, where we supplied boxes of celebrations and the remaining funds will go towards covering the costs of the food that was provided on Christmas day.

Finally, on the last day of term our Christmas jumper day raised £663 for Save the Children.

We have been overwhelmed by your support yet again so thank you for all your contributions in these such difficult times.



Remote Learning Updates

Thank you to parents for supporting the rapid turnaround back to remote learning. We are very grateful.

For current year 8-11 parents, there are very few changes from the summer provision. We appreciate that for newer year 7 parents and carers, this might be different to primary school and therefore these headlines might help you further.

- Google Classroom is the main platform that we use for learning. Students need a code to join this. These are published for all classes on the website. Science do utilise a platform called Doodle and there are various bespoke platforms for other areas of school life, including MyMaths, Bedrock and Accelerated Reader.
- New this term is a personalised aspect of each lesson from the subject teacher; an introduction, being present during the lesson on camera, a voice over etc. This requires a GoogleMeet link that will appear in the class 'stream'. Teachers may only publish this just before the lesson as they wish to be present before the students.
- New this term is teaching in real time. Lessons have been shortened to 45 minutes again and start as per a 4:1 structured day. The students should know what this means! If your child is unable to be present for any reason during the lesson time, details of the learning are still published on the stream.

We know that broadband is stretched if you are working from home as a parent, we also know that students may be sharing devices too. We do recommend completing the work on the same day as it is set however to keep up.

- New this term are registers being taken in every lesson whether verbally or discretely by the teacher.
- If your child is too poorly to participate in learning, you should contact the Attendance Officer as normal. JackieHODGES@alcesteracademy.org.uk. Mrs Hodges lets the staff know who cannot participate.
- Work is submitted via Google Classroom. The students have been doing this during the autumn term and should know how to do this. There is a parent 'training room' on the website if you need it <https://www.alcesteracademy.org.uk/life-at-alcester-academy/coronavirus--covid-19/google-training-room> Thanks to Mr Hall for thinking of this aspect for you all!
- We take care to monitor progress and participation and the staff have an internal tracker to update each week. If there are any concerns with engagement, we aim to let you know sooner rather than later. Equally we try to nominate those students worthy of praise for great work from home. These are rewarded with *Stars* - a lovely email to receive. We can't give you the detail of the reason for a *Star* but we do give you the subject area.
- We recommend that you check your child's work from time to time. Daily is ideal but I know that you are all busy people too. Sit with them and ask to see what has been completed; I'm sure that it will interest you. Staff will aim to give regular feedback either verbally, by class on the Google Stream or individually. Students can privately message teachers by Gmail if they are struggling with any aspect of the work. SLT can see all of these messages as needed. Bear with us, there are hundreds each week! We do ask students to address staff in the chat area, or on Gmail with courtesy and respect. A lot of our year 7s especially are using their microphone or chat function inappropriately at the moment and we need to train them that their lessons are still very much like school in terms of expectations.

Lesson timings

Lesson 1 is 9.10-9.55am

Lesson 2 is 10.10- 10.55am

Break is until 11.35am

Lesson 3 11.35-12.25pm

Lesson 4 12.35-1.25pm

Lunch is 1.25- 2.25pm

**Lesson 5 is 2.25- 3.10pm
(approximately)**

Core PE

Mr Powell, Head of PE will post activities on the PE Google Classrooms for students to do during lessons or that day. These have been designed per year group. Students can post photographs back or short videos of them doing these. Obviously this subject is one of the hardest to teach remotely.

Year 7—dqtua7f

Year 8—2fylfss

Year 9—xnxpvpu

Year 10—gmahwns

Year 11—j2dtean

BTEC PE students will have set lessons from Mr Powell as per their time table.

Assemblies and Tutor time

We will be running assemblies each week, via Microsoft Teams, as follows:

Year 7 — Wednesday

Year 8, 9 and 10 — Thursday

Year 11— Friday

Along with a whole school tutor time session on Tuesday—Google Meet via Google Classroom. From next week links for assemblies will go to both student and parent email addresses.

Safeguarding

We ask that students are up and dressed to learn. We loved seeing those students in school uniform ready to go on Tuesday morning! A communal area of the house is preferred but not always possible we know. Students can use their camera and

should feel able to use their audio to participate in the learning fully but appropriately at all times. Naturally, some staff are also working from their own homes and we ask that this aspect is also totally respected.

Please remind students that they should not be recording or taking photographs or screen shots within lessons AT ALL.

If a bedroom is the only place to work, staff do appreciate this and we ask parents to ensure that sensible precautions and routines are followed whilst we are using the video aspect of Google.

HEADTEACHER CHALLENGE

Headteacher Challenge

I do look forward to posing a few challenges for the students at home. I'll publish these each week. Shrove Tuesday will certainly need to see the most creative pancakes being made to give you some forward notice!

This week's challenge is to:

**Make the Alcester Academy logo out of....
finish the sentence
and send me a picture of your design!**

Coloured Socks?

Clothes?

Food?

Lego?

Mosaic beads?

Plasticine?

Other ideas you can creatively think of
but not on the computer.

Closing date is Thursday 14th January 2021 at 9am. Send photos of your designs to head@alcesteracademy.org.uk.

Most creative idea wins epraise points and house points. Designs shown in next week's bulletin.



SLDs

For parents of students in years 8-11, you'll remember that we introduced *Virtual Super Learning Days* during the last lockdown by subject areas or themes. These proved to be really popular for families and gave students a well needed break from screen work. We are considering re-introducing these days and will update you in future days as required.

Other lockdown activities ideas

Last lockdown, we did update you on numerous other websites providing educational support right now. BBC Bitesize and Oak Academy are still nationally recognised as quality sources. Joe Wicks starts again on Monday too. Twitter is a superb resource to find great ideas. I will often retweet these @AlcesterAcademy If your child is an art fan @darrylwakelam has some inspirational projects to have a go at. Younger students can read and quiz from home now on Accelerated Reader. Please see LRC News on page 11.

<https://www.youtube.com/channel/UCdmPjhKMaXNNeCr1FjuMvag>. Every weekend - from Friday evening to Sunday evening *The show must go on!* place a live recording of theatre. This is only available for 48 hours of that weekend.

Lots of things to watch on the digital theatre <https://www.digitaltheatreplus.com/education/contact-us>

Username: **student@alcesteracademy.org.uk**
Password: **student123 (students only please)**

<https://www.sky.com/watch/channel/sky-arts>. If you have Sky at home.

<https://www.dramaonlinelibrary.com/custom-browse?docid=nationalTheatreCollection>

Username: **5Uh&2Xz+**
Password: **4Fn'2Yt\$**

The Log in button is in the top right-hand corner of the landing page.

Please insert your username and password to left-hand option of the login pop-up, called ACCESS LOG in

This is currently streaming the James Corden *One Man, Two Guvnor* (12A) on it and Benedict Cumberbatch *Frankenstein*(12A).

We have an extra-curricular google classroom for students with lots of other ideas to try; train your pet, teach yourself chess, learn paper folding, meditation, recipe ideas etc etc. **Code: 3p67ry6**

https://www.whatsonstage.com/london-theatre/news/stage-shows-musicals-opera-free-stream-online_51198.html

I will also tweet about any national or local competitions that children may wish to enter whilst they have a bit more time at home. If you are struggling for ideas, please contact school.

Coronavirus Updates

Useful Contacts

<https://www.alcesteracademy.org.uk/quality-of-education/curriculum-contacts>. The covid website page has the email addresses of key staff if you require these right now.

We are still running a skeleton service on the school telephone switchboard Tel: 01789 762285
Updates and celebrations of activities will be tweeted @AlcesterAcademy

In addition, please contact:
Sarah Mellors, headteacher as required:
head@alcesteracademy.org.uk

Wendy Woodman, Director of Studies regarding learning or progress:
wendywoodman@alcesteracademy.org.uk

Karen Buckthorp, Director of Student Wellbeing regarding pastoral support, mental health issues or safeguarding:
karenbuckthorp@alcesteracademy.org.uk

Students can get support by emailing:
lsusupport@alcesteracademy.org.uk
or utilising the *Text Academy* service
Mobile Number: 07563130478
Email: textacademy@alcesteracademy.org.uk
This information is in planners.

For parents struggling right now, help is available for them through the Warwickshire Welfare Scheme.

<https://www.warwickshire.gov.uk/localwelfarescheme>

IT Support

Mr Alexander is in school and can be reached via the help desk help@lourdesit.org.uk or distancelearningqueries@alcesteracademy.org.uk. We thank him and Lourdes IT as ever for their behind the scenes support.

Free School Meals

Our Catering Manager, Marie Parker is in school and can make up daily 'grab bags' for any parent in receipt of free school meals. Collection from school. Please email admin@alcesteracademy.org.uk to arrange this in a covid safe way. I've heard nothing yet about future provision for school holiday time.

Equipment

If students need any equipment at this time due to having to working from home, please contact lsusupport@alcesteracademy.org.uk

Green Bus Update

From Director, Ian Mack

'We'll continue to operate a full service on routes 501-505 at the usual times for anyone who needs to come into school, including staff if necessary. We're offering free travel to staff, children of key-workers, and vulnerable children - they don't need a pass, and they can just walk on the bus'

We thank the Green Bus for this generous offer in difficult times.



ISOLATION PERIODS, DEFINITIONS OF CLOSE CONTACT AND INFECTIOUS PERIOD FOR COVID-19

- ❖ Positive person: isolate for at least 10 days AND until well and fever free for 48 hours
- ❖ Identify **ALL** close contacts in infectious period (see below for definitions) – all to isolate for 10 days (14 days if contact in a health and care setting)
 - ❖ *Contacts don't need a test unless have symptoms*
 - ❖ *Close contacts that receive a negative test result must still complete 10-day isolation (14 days if contact in a health and care setting)*
- ❖ Follow '[Stay at home](#)' guidance

DEFINITIONS

CLOSE CONTACTS	INFECTIOUS PERIOD
Direct physical contact (any duration)	If symptomatic: 2 clear days before day on which symptoms start – and for 10 days after
Close contact under 1m for 1 minute or more	
Face-to-face contact under 1m (any duration)	
1-2m for 15 minutes or more	No symptoms: 2 clear days before the day of the test – to 10 days after
Travel in a vehicle	

Visitors in to school

Please do not come into school presently unless this is pre-arranged with a member of staff. Even then, please limit individuals to those needed only wearing face coverings. We are trying to keep everyone as safe as possible.

Vulnerable children and key worker children

Please contact Miss Buckthorp if needed to discuss the possibility of children being in school if you fall in to this category.

Well done to those students in school this week. We are very grateful to TAs and Midday Supervisors for maintaining their consistent daily support of these groups every day in uncertain times.

Confirmed Cases

Please continue to update me of any positive covid cases. We are here to support you and want to track how the students are doing. head@alcesteracademy.org.uk

Lateral Flow Testing Update

Our test kits arrived on time this week and we have managed to set up the hall as our rapid test centre. Thank you all for promptly completing the on line consent form. The privacy notice regarding this is available on the covid page of the website.

In light of the news this week that we were to move to remote education until February half term, we have now slowed down the testing roll out and will await further GOV.UK instructions.



Staff working from school and our vulnerable or key worker children will be tested and we began testing today for those year 11s still sitting vocational exams in the next few days for iMedia and Child Development. We wish them the best of luck.

Whilst you are at home with the children, it is a good time to show them the 'how to' videos for lateral flow tests so that they can begin to familiarise themselves with the process expected. We have a good team of volunteers helping out to guide them once we do operate testing and I thank these individuals for supporting us right now.

Don't forget that we are here for you during this difficult time. You are not bothering us in any way if you make contact and we will aim to respond as quickly as we can. We have tried to make everything as easy as it can be in order to reduce as much stress for you as parents.

Thank you for this week. Please tell the students that we miss them and hope that you all keep as safe as possible right now.

Have a good weekend.
Best wishes

Sarah Mellors
Headteacher

Warwickshire 'Show You Care' Campaign

Please ask the students to 'show they care' by colouring or drawing a heart to put in your window this lockdown.



SHOW YOU CARE

**Wear a mask.
Keep your distance.
Take your temperature.
Wash your hands.**

ACCESS TO GOOGLE CLASSROOM FROM YOUR PHONE, XBOX OR PLAYSTATION

As we all struggle with ways to meet the needs of our children while they are learning at home, you might be wondering how you or your child can access Google Classroom; especially in one computer households or for students without devices.

Well, accessing Classroom could be easier than you think!

GOOGLE CLASSROOM APP

The easiest way to access Google Classroom without a computer is by using the Classroom App on a phone or a tablet. [Click here for the app on the App Store](#) and [click here for Google Play](#). Once the app has been downloaded to a phone or tablet, students login with their school Google accounts and they will be able to access an interface that feels very similar to the one they find at school. They can click on any assignment, interact with the content, watch any videos that are posted and even create Slides and Docs right on their phones! Teachers can even mark work and give feedback directly to students with the app. It is really a great tool to have at your fingertips.

XBOX AND PLAYSTATION

Google Classroom can be opened on Xbox and Playstation! There is not an app that can be added to their consoles. Instead, you will have to use the built-in web browsers that come on the two devices. On Xbox, it is Microsoft Edge. On Playstation, it is the "www" browser.

Your child will probably know how to find the browsers on their consoles, but if not, each one has a search function they can access on the home screen.

Once the browser has been opened:

- 1. Type in to the URL bar -
classroom.google.com*
- 2. A prompt for a Google account will appear.*
- 3. Type in your school Google email and
password – it doesn't end in google.com and
that is ok!*
- 4. The Classroom home screen will open up.*

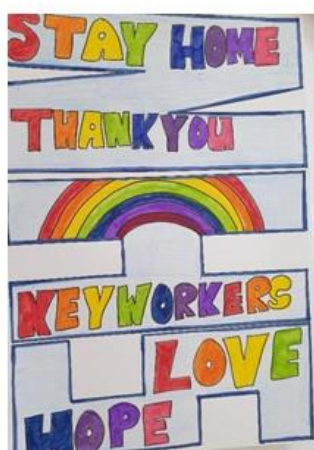
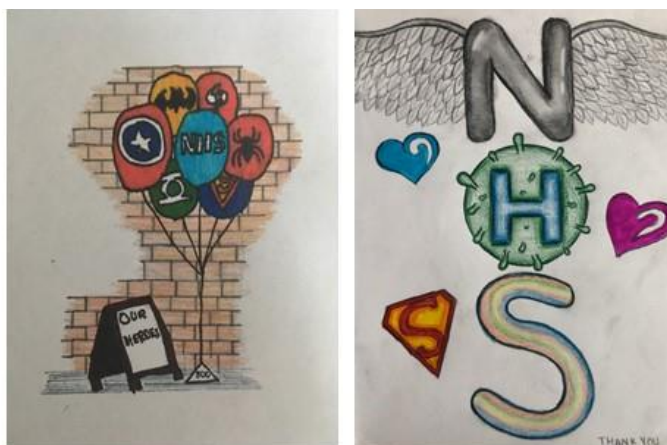


*If your child has a keyboard that they can plug in, it will be much easier for them to navigate. Otherwise, they will have to use their controllers to click on the classroom tiles,
open up assignments and type.*

During a trial run on both consoles the tester was able to open assignments and interact with video and written instructions, and open attachments like Docs and Slides and type on them.

<https://sway.office.com/ka0yFbKLeluli0Wf>

Artwork of the Week



Just a reminder of some amazing year 7 & 8 artwork from the last lockdown, supporting our fantastic NHS staff and key workers. Thank you to our heroes!
Mr Yarrington

epraise news

epraise

EPraise

Congratulations to the Top Three Students:

1st—Jack—7HT

2nd—Isabelle—9WA

3rd—Kaitlyn— 9WA

Topping the charts in other years:

Year 8—Dan

Year 10—Luke

Year 11—Archie

Top Tutor Groups:

1st—7HT

2nd—7TY

3rd—9WA (with only 1 point between 9WA and 7NE for third place! Exciting times!)

Top Subject and Staff:

Science is the top subject, with Mr Bastock leading staff.

Congratulations to everyone!



FIS Newsletter

I thoroughly recommend parents and carers subscribe to the FIS newsletter for Warwickshire at this time for support and guidance.

<https://www.warwickshire.gov.uk/children-families>



LRC News

Here are some reminders of what you can access while you are at home over the lockdown period...

Some English sets in years 7, 8, 9 and 10 can access Accelerated Reader quizzing at home. Make sure you are using Google Chrome and this link/URL to access the system linked to Alcester Academy: <https://ukhosted26.renlearn.co.uk/1893467/> (just doing a Google search will not link you to the school system).



Then type in your username as you usually would and the password - **abc**

Years 7 to 10 can access myON eReading through any mainstream web browser using the URL: <https://www.myon.co.uk/login/index.html>

Log in by entering your myON username (the same as your school network username) and the password **Fredfred1**



Years 8 and 9 can access their library accounts to search the catalogue and reserve books - they can also write book reviews!

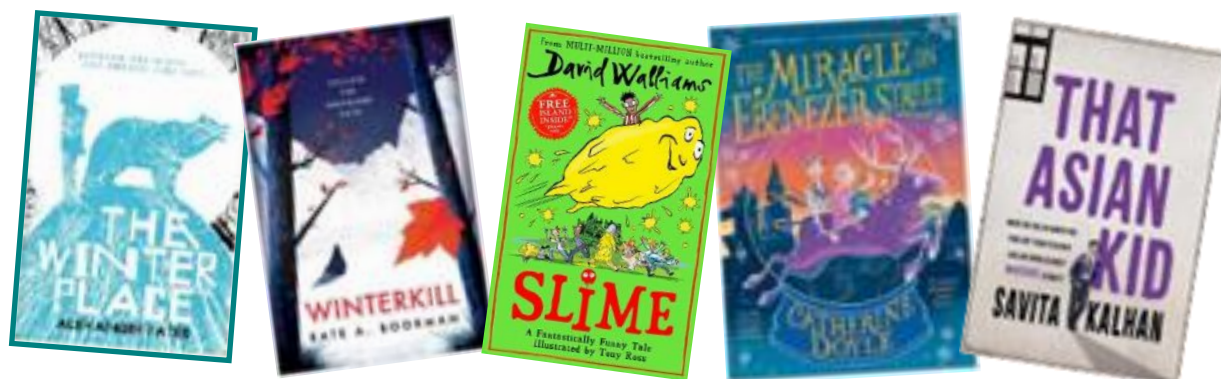
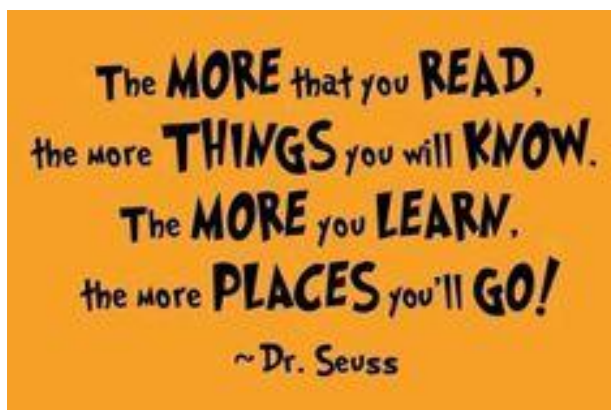
It can be accessed through any mainstream web browser by using the

URL: <https://apps.libresoft.co.uk/9374240-hmlpg8jkqb72jyx911bd-aa>

Then log in by entering your library account number – which should have been given to you by Mrs Hands or their English teacher. The password is - **Academy1**



Get free access to eBooks and eAudiobooks, with Warwickshire Libraries using your library membership! If you need to join you can do so online - <https://www.warwickshire.gov.uk/jointhelibrary> and then use their online 'Borrow Box' - https://fe.bolindigital.com/wldcs_bol_fo/b2i/mainPage.html?b2bSite=6404



Cricket Star

Kobe in year 7 has been selected for Warwickshire Under 12's cricket squad. This is a fantastic achievement as only 24 boys were selected out of the whole of Warwickshire and this is the third time that Kobe has been selected for the county squad, his training will take place at Edgbaston in Birmingham. Kobe has been playing cricket since he was 6 years old and plays club cricket for Alcester and Ragley. We wish him all the best and will look forward to seeing his cricket career develop over the coming years.



Twitter at Alcester Academy

Please follow our new Geography department twitter account <http://twitter.com/HStedman5>

Follow us on Twitter: <https://twitter.com/AlcesterAcademy>

Follow us on Facebook: <https://www.facebook.com/alcesteracademy1/>

Teaching and Learning updates at: https://twitter.com/AlcesAcad_TandL

PE Department at: https://twitter.com/AAcademy_PE

Science Department at: https://twitter.com/aa_science

Art Department at: [@jamesyarrinto2](https://twitter.com/@jamesyarrinto2)

LRC at: https://twitter.com/AA_LRC_Library

Trips at: https://twitter.com/AA_Trips

Design Technology Department at: <https://twitter.com/@AADesignTechnol>

Performing Arts Department at: <https://twitter.com/AlcesterAllstar>

English Department at: <https://twitter.com/@EnglishAlcester>

MFL Department at: <https://twitter.com/@AcademyMfl>

Rock Academy at: https://twitter.com/@academy_rock

Alcester Academy Houses at: [@AAcademy_House](https://twitter.com/@AAcademy_House)

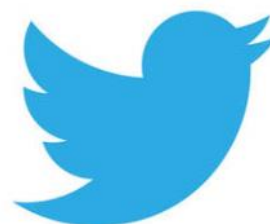
SEND at: [@SENDAA13](https://twitter.com/@SENDAA13)

History and Genealogy at: [@AGenealogy](https://twitter.com/@AGenealogy)

Philosophy, Theology and Ethics at: [@AA_PTE](https://twitter.com/@AA_PTE)

Geography with Mr B at: [@Mr_BOWATER](https://twitter.com/@Mr_BOWATER)

History at: <https://twitter.com/AlcesterHistory>



MFL Idiom of the Week

English: Life goes on

French: Un clou chasse l'autre

One nail drives out another

German: Das Leben geht weiter

Life goes on





ENGLAND LOCKDOWN

STAY AT HOME

**THE NEW VARIANT OF CORONAVIRUS IS SPREADING FAST.
WE ALL NEED TO PLAY OUR PART TO STOP THE SPREAD.**

▶ LEAVING HOME

You must not leave, or be outside of your home or garden, except for a very limited set of exemptions e.g. to shop for basic necessities, exercise, go to work if you cannot do so from home, or to escape risk of harm.

▶ MEETING OTHERS

You cannot leave your home to meet socially with anyone, except with your household or support bubble (if eligible to form one). Stay 2 metres apart from anyone not in your household or support bubble.

▶ EXERCISE

You may exercise on your own, with your household or support bubble, or with one person from another household (when on your own). Stay 2 metres apart from anyone not in your household or support bubble.

▶ BARS, PUBS AND RESTAURANTS

Hospitality closed aside from sales by takeaway (until 11pm), click-and-collect, drive-through or delivery. Alcohol cannot be purchased through takeaway or click-and-collect from hospitality venues.

▶ RETAIL

Essential shops can open. Non-essential retail must close and can only run click-and-collect and delivery.

▶ WORK AND BUSINESS

Everyone must work from home unless they are unable to do so.

▶ EDUCATION

Early years settings open. Primary and secondary schools and colleges move to remote provision except for vulnerable children and children of critical workers. Most university students to move to remote learning.

▶ LEISURE AND SPORTING FACILITIES

Closed, with limited exceptions.

▶ ACCOMMODATION

Closed, with limited exceptions.

▶ PERSONAL CARE

Closed.

▶ ENTERTAINMENT

Closed.

▶ OVERNIGHT STAYS

You must not stay overnight away from home. Limited exceptions apply e.g. to stay with your support bubble.

▶ WEDDINGS AND FUNERALS

Funerals of up to 30 people permitted. Weddings up to 6 people permitted in exceptional circumstances. Wakes and other linked ceremonial events of up to 6 permitted.

▶ PLACES OF WORSHIP

Places of worship can remain open and communal worship is permitted, but you must not mix with those outside your household or support bubble.

▶ TRAVELLING

You must stay at home. If you do leave home for a very limited set of exemptions, you should stay local in the village, town, or part of the city where you live where possible. Do not travel abroad unless an exemption applies.

▶ CLINICALLY EXTREMELY VULNERABLE

Shielding reintroduced across England. You should not travel to work, school, college or university and should limit the time you spend outside the home. You should only go out for medical appointments, exercise or if it is essential.

▶ CARE HOME VISITS

Visits can take place with arrangements such as substantial screens, visiting pods, or behind windows. Close-contact indoor visits are not allowed. No visits will be permitted in the event of an outbreak but end of life visits are permitted in all circumstances.

STAY HOME ▶ PROTECT THE NHS ▶ SAVE LIVES

For more information go to:
gov.uk/coronavirus